

Installation Instructions

C5 / C6 / C7 Camera Mount

V2 UPDATED 2021/01/31

Product Details:

This kit provides a lightweight, rigid, in-car camera mounting solution without the need of a harness or roll bar. The parts machined from aerospace grade, billet 6061-T6 aluminum which is known for its high strength-to-weight ratio. The tube is interference fit to provide vibration resistance.

The entire kit weighs less than .9 lbs.

This mount is removable, however the 1/4 inch base plate ② will remain permanently bonded to the chassis. When the mount is attached, a flap or hole in the carpet is required. When removed, the carpet will cover the base plate without showing.

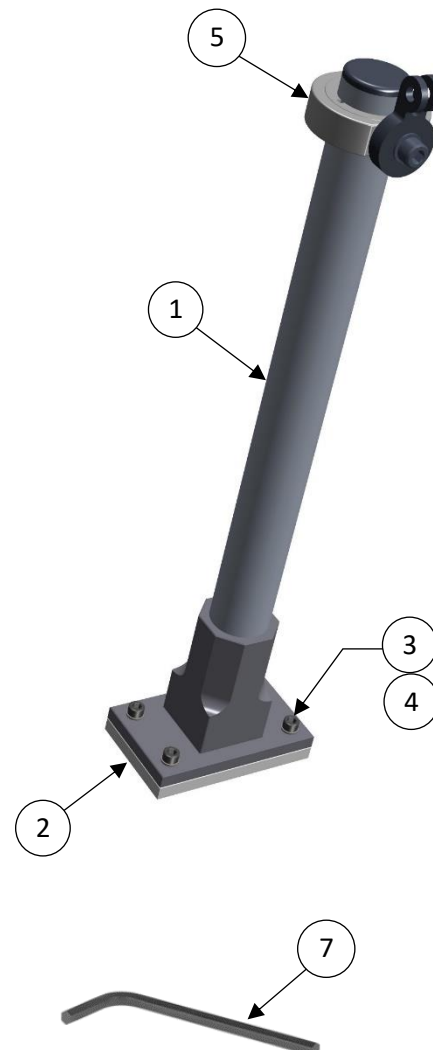


Tools Required:

- Painters tape
- Medium or coarse grit sand paper
- Isopropyl alcohol
- Knife or razor blade
- 3/16" allen key (*not included*)

Included Parts:

#	Part	QTY
1	Camera Mount Assembly	1
2	Base Plate	1
3	#8-32 Cap Screw	4
4	#8-32 Washer	4
5	Shaft Collar Clamp	1
6	JB Weld Epoxy (5020 PSI)	1
7	9/64" hex allen key	1



6

Instructions:

Step 1) Remove carpet panel behind driver's seat. No disassembly required.



Step 2) Locate the desired position for the mount, usually centered in the vehicle and on the top surface of the chassis, as shown below.

Apply painter's tape to an area 1/4 inch wider than the base plate ② to keep it clean.

Optional. Scuff up the mounting surface with medium or coarse sand paper. This will ensure the epoxy makes a robust bond.

IMPORTANT! Clean the mounting surface and base plate ② with isopropyl alcohol before proceeding.



Step 3) Mix J-B Weld epoxy using equal parts (1:1) into a cup and mix thoroughly. Recommend using both tubes entirely. Follow all safety precautions on J-B Weld label. Use gloves.



EPOXY IS INCLUDED WITH KIT

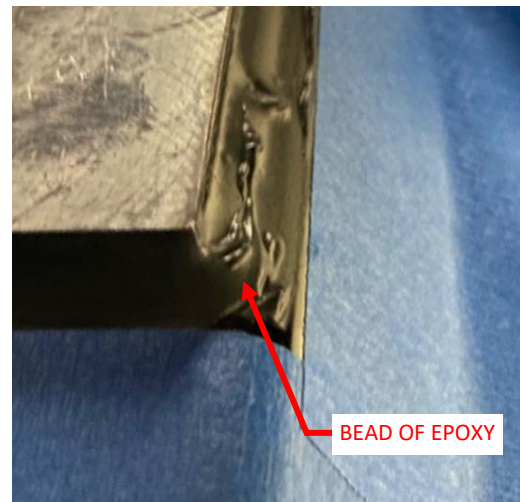
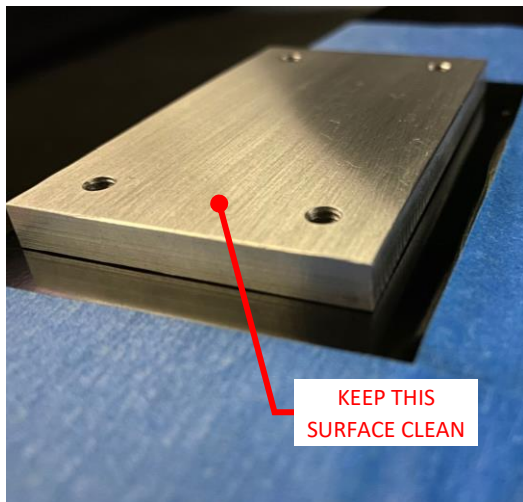
Step 4) **IMPORTANT! DO NOT REMOVE** any masking tape from the base plate ②.

IMPORTANT! Keep top surface of the base plate ② clean during this process.

Apply a thick layer of epoxy (approximately 1/8") to the base plate. Make sure it is clean before application.

Place the base plate on the mounting surface and press down until it bottoms out. This will squeeze out some of the epoxy to create a bead along the perimeter, as shown below. The tabs on the bottom of the base plate will ensure there is a layer of epoxy between the plate and chassis.

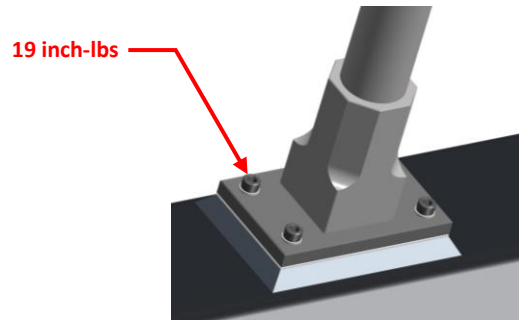
Remove the masking tape. Allow 16-24 hours for epoxy to cure.



Step 5) Install the carpet into the car and cut out a flap to allow the camera mount to fit through. A larger flap, the size of the base plate, will allow you to install and remove the camera mount very easily, recommended. A smaller flap, 1.25" square, will cover most of the mount, but you will need to pull back the carpet to torque the bolts.



Step 6) Attach camera mount assembly ① using supplied fasteners ③ ④. Torque bolts with a 9/64" allen key. DO NOT OVER TORQUE. For you engineers, torque to **19 INCH-POUNDS**.



Step 7) Align the Shaft Collar Clamp ⑤ into the desired position. It can be rotated or moved upward/downward for full adjustability. Snug the shaft collar bolts, not much torque is required. Make sure the tube does not deform.



Tighten with
3/16 allen key

(GoPro not included)

Step 8) Complete!

Additional Pictures:



GT350 APPLICATION

TIP:

Position your camera as high as possible, but keep the horizon clear from the rearview mirror.

